

APPLICATION FOR CERTIFICATE OF APPROPRIATENESS (COA)

Building address 55 West Market Street
Owner of building Donald Kees Phone
Owner's email & mailing address
Applicant Ben Madecic Phone:
Applicant's email & mailing address
Street and Number City State Zip Code

APPLICANT MUST ATTEND MEETING FOR CASE TO BE HEARD.
USE THE CHECKLIST ON THE BACK OF THIS APPLICATION TO ENSURE YOUR SUBMISSION IS COMPLETE.

Historic & Architectural Review Board - Application form, photographs, and drawings (if necessary) must be submitted by 12:00 Noon on the last Wednesday of the month in order to be placed on the agenda for the next meeting.

South Bethlehem & Mount Airy Historic Conservation Commission - Application form, photographs, and drawings (if necessary) must be submitted by 12:00 noon on the second Monday of the month in order to be placed on the agenda for the next meeting.

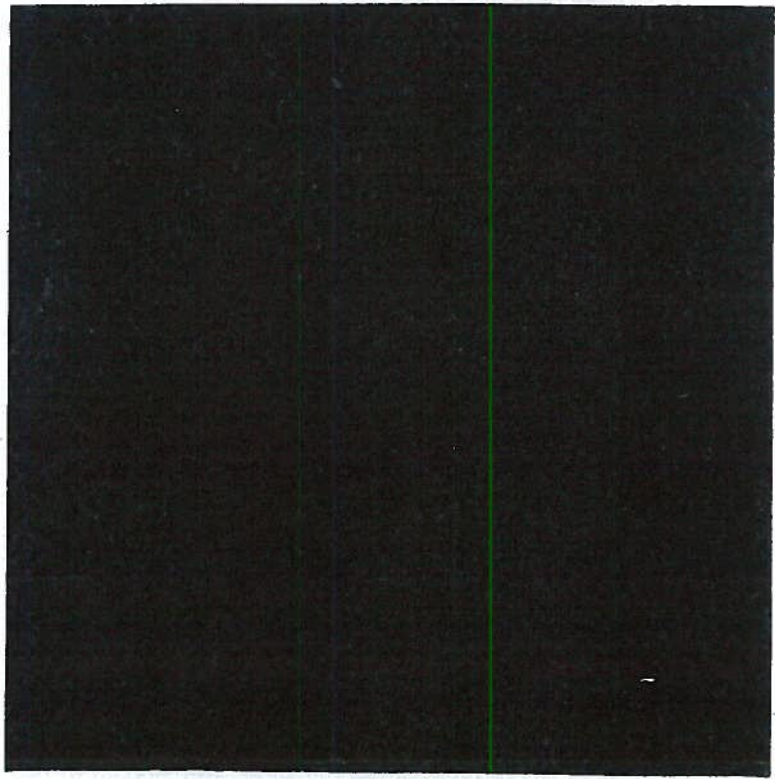
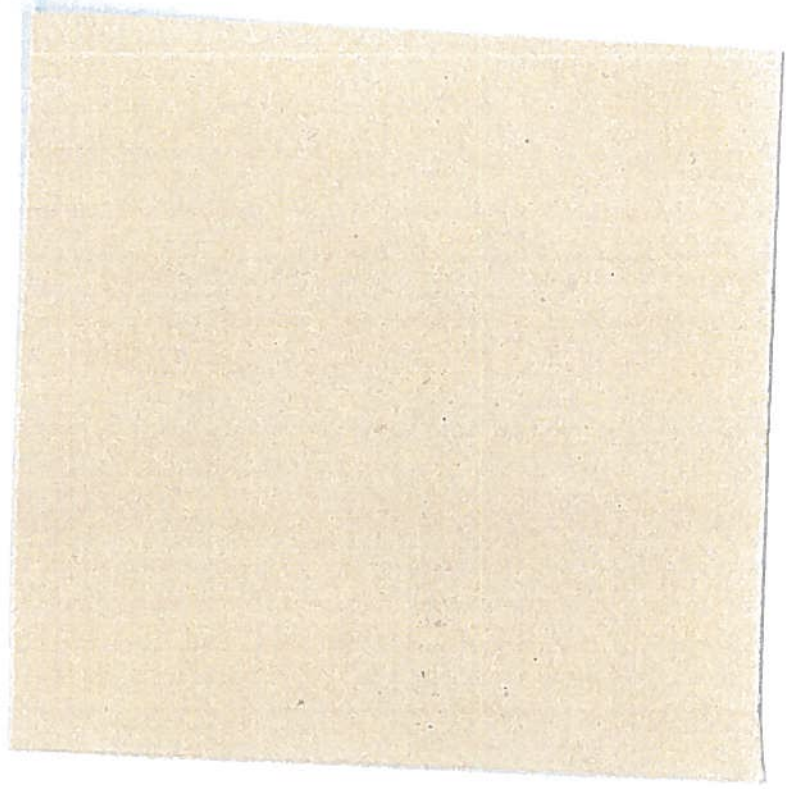
1. PHOTOGRAPHS - Photographs of your building and neighboring buildings must accompany your application.

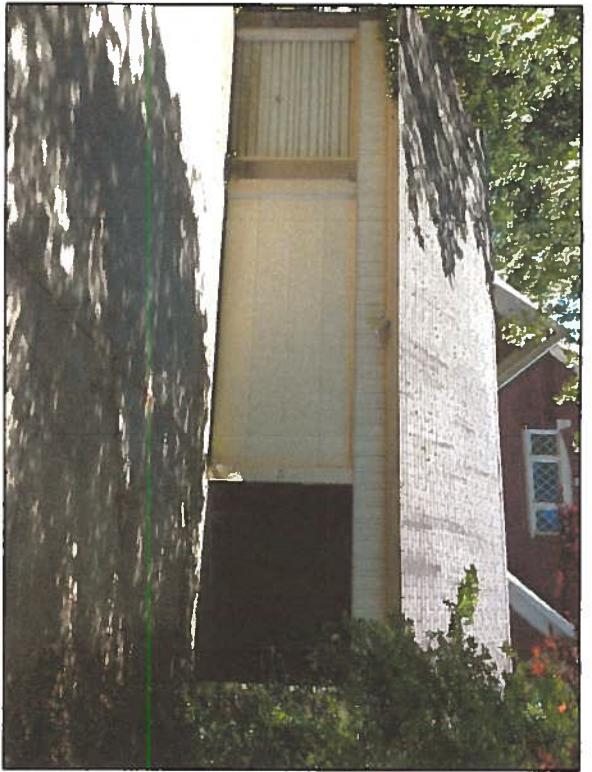
2. TYPE OF WORK PROPOSED - Check all that apply. Please bring any samples or manufactures specifications for products you will use in this project.
Trim and decorative woodwork
X Siding and Masonry
Roofing, gutter and downspout
X Windows, doors, and associated hardware
Storm windows and storm doors
Shutters and associated hardware
Paint (Submit color chips - HARB only)
Skylights
Metal work
X Light fixtures
Signs
Demolition
X Other Gate

3. DRAWINGS OF PROPOSED WORK - Required drawings must accompany your application. Please submit ONE ORIGINAL AND TEN (10) COPIES OF DRAWINGS, PHOTOGRAPHS, APPLICATION FORM, AND ANY SPECIFICATIONS
X Alteration, renovation, restoration (1/4 or 1/8"=1'0" scale drawings required IF walls or openings altered.)
New addition (1/4" or 1/8"=1'0" scale drawings: elevations, floor plans, site plan)
New building or structure (1/4" or 1/8"=1'0" scale drawings: elevations, floor plans, site plan)
Demolition, removal of building features or building (1/4" or 1/8"=1'0" scale drawings: elevation of remaining site and site plan)
A scale drawing, with an elevation view, is required for all sign submittals

4. DESCRIBE PROJECT - Describe any work checked in #2 and #3 above. Attach additional sheets as needed.
Remove existing doors, install New brick fire's & area above garage doors, install (3) New lights, install (4) new Garage doors & openers, Driveway Gate

5. APPLICANT'S SIGNATURE Ben Madecic DATE: 7/21/18





EXIST. FIBERGLASS ASPHALT SHINGLES
TO REMAIN



Garage



Proposed North Elevation

1/4" = 1.0'

(3) New Carriage Lamps
(4) New 8x7' Carriage Style
Doors - Northampton Style
Evente Doors - Painted Black

New Brick Veneer to
Match Dwelling

Repaint Exst. Wd. Cornice to
Match Trim Color on Dwelling
Inset Wood or PVC
Header - Painted Trim Color
Standard Applied
Hardware

Proposed Garage Facade Alteration at:		06-25-18
Donald Kaas		SK-1
55 W Market Street Potholeham, PA		
by C. Neal		



EVERITE



RAISE YOUR EXPECTATIONS.™

North Country Series

Model: York

Stain Grade Western Red Cedar

V-Grooved T&G Panels

36" Glass Section

Insulated Clear 4 OV 4 Square Glass

Factory Applied Clear Satin Finish



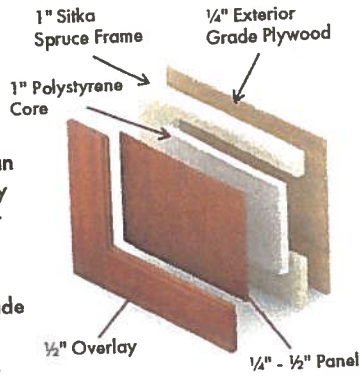
HANDCRAFTED SERIES

REAL WOOD GARAGE DOORS

Morano BUILDER SERIES

Built on the same sturdy frame as the Charles River Series, craftsmen attach high quality, 1/4" plywood on both sides of the frame. Inside is 1" of polystyrene insulation creating an R value of 6. Paint grade overlay materials include Extira, a water resistant engineered wood, fine quality marine grade Meranti plywood and Tricoya. Stain grade materials include Sapele with marine grade Sapele plywood. Morano are a great option for cost conscious consumers wanting a well constructed carriage door.

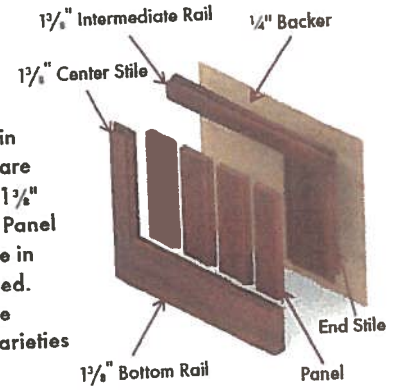
Warranty: 1 Year



Allegheny River SEMI-CUSTOM SERIES

The Allegheny River Semi-Custom Series offers an attractive price for a true carriage door look. These doors are available in paint or stain grade. They are built using Everite's noted 1 3/8" stile and rail frame. Panel options include flat, tongue in groove, v-grooved or raised. Semi-Custom doors can be made using other wood varieties shown below.

Warranty: 1 Year



Paint Grade

Marine grade Meranti Plywood, Tricoya, MDO
Extira

Stain Grade

Sapele marine grade plywood
Sapele

Paint Grade

Extira, Tricoya, MDO

Clear Hemlock, Tricoya, MDO

Stain Grade

Clear Hemlock, Sapele, Western Red Cedar

Clear Hemlock, Sapele, Western Red Cedar

Models



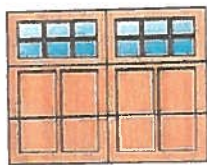
Carbon



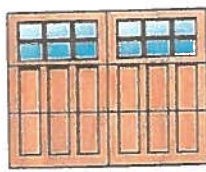
Monroe



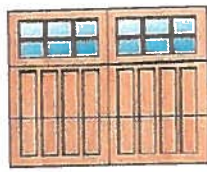
Northampton



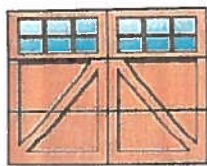
Somerset



Westmoreland



Fayette



Lehigh

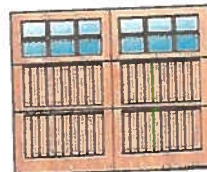


Berks



Luzerne

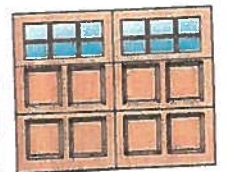
Models



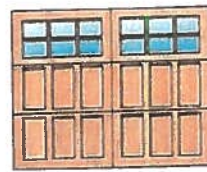
Allegheny



Washington



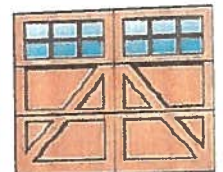
Mercer



Bradford



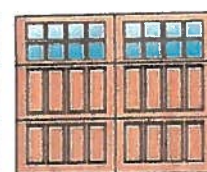
Susquehanna



Chester



Butler*



Clearfield*



Bucks

*Raised Panel Model





Raise Your Expectations™

Superior Detail

Every Everite door is handmade. We use state-of-the-art equipment to produce the industry's best edge detail and finish. Most models are free from exposed nails or fasteners.

Fine Materials

The best products come from the best materials. Everite sources the best quality kiln dried lumber and composites from all over the world.

Deep Mortise & Tenon Joints

Everite uses the tried-and-true wood joining techniques that have stood the test of time.

Beveled Bottom Rail

Charles River and North County models feature inset paneling with a beveled edge on the bottom rail, eliminating water collection grooves. Water rolls off harmlessly.

True Divided Lites Standard

Simulated divided lites have become the industry norm. At Everite, true divided lites remain the standard.

Materials



DOUGLAS FIR is native to North America. It is known for its light rosy color and straight grain. Its color reddens over time when exposed to light. Designers appreciate its rich visual texture, grain pattern and its beautiful response to fine craftsmanship and finishing.



EXTIRA is a paint grade, non-structural, engineered wood product suitable for many environments. It is designed to resist damage from moisture, rot and insects. It is solid, dimensionally stable, free of knots or voids, and resists checking, splitting and cracking. Extira cannot be stained.



HEMLOCK is native to North America and is known for its fine texture, straight grain, and stiffness. Its color darkens slightly with age and can be painted or stained.



MERANTI is a medium-to-coarse textured wood native to Southeast Asia. Meranti is one of a collection of species marketed as Philippine mahogany. Its light and dark red varieties produce ranges in color from pale pink to brown and reddish brown.



RADIATA PINE is native to California and is farmed extensively. It's natural color is pale yellow-brown and is generally straight grained. Compared to other pines, there is little contrast in the appearance of growth rings, contributing to its even and uniform texture.



SAPELE is known for its durability and beautiful graining. Native to Africa, the wood has a dark red brown color similar to mahogany. Sapele's excellent response to stain and its color, texture and grain make it a favorite among customers.



SPANISH CEDAR is a close relative of and resembles Honduras Mahogany. Its coloration is light red or pinkish orange with a straight, but wavy, grain. The wood has a moderately coarse texture. Its insect repelling resin adds to its durability.



WESTERN RED CEDAR is an American wood with a soft red-brown color and a tight, straight grain with few knots. It can be finished to a smooth, silky surface with little effort. Lightest in weight, it is valued for its distinct appearance, aroma, and its high natural resistance to decay.

Finishing

Ask about factory finishing! Sikkens Door & Window products used for stained doors; Benjamin Moore products for painted doors. Extends the factory warranty by one year. Doors arrive ready to install. Ask about our extended warranties.

Decorative Hardware



Spear



NEW

Fleur de Lis



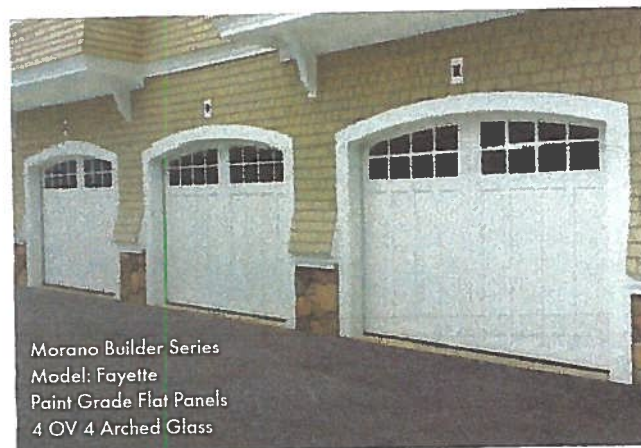
Bean



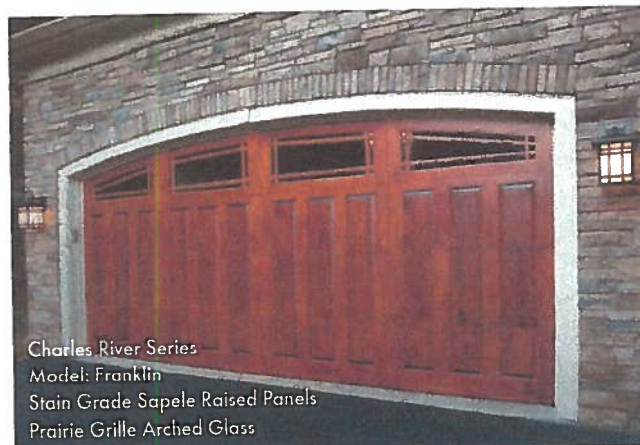
Door knockers



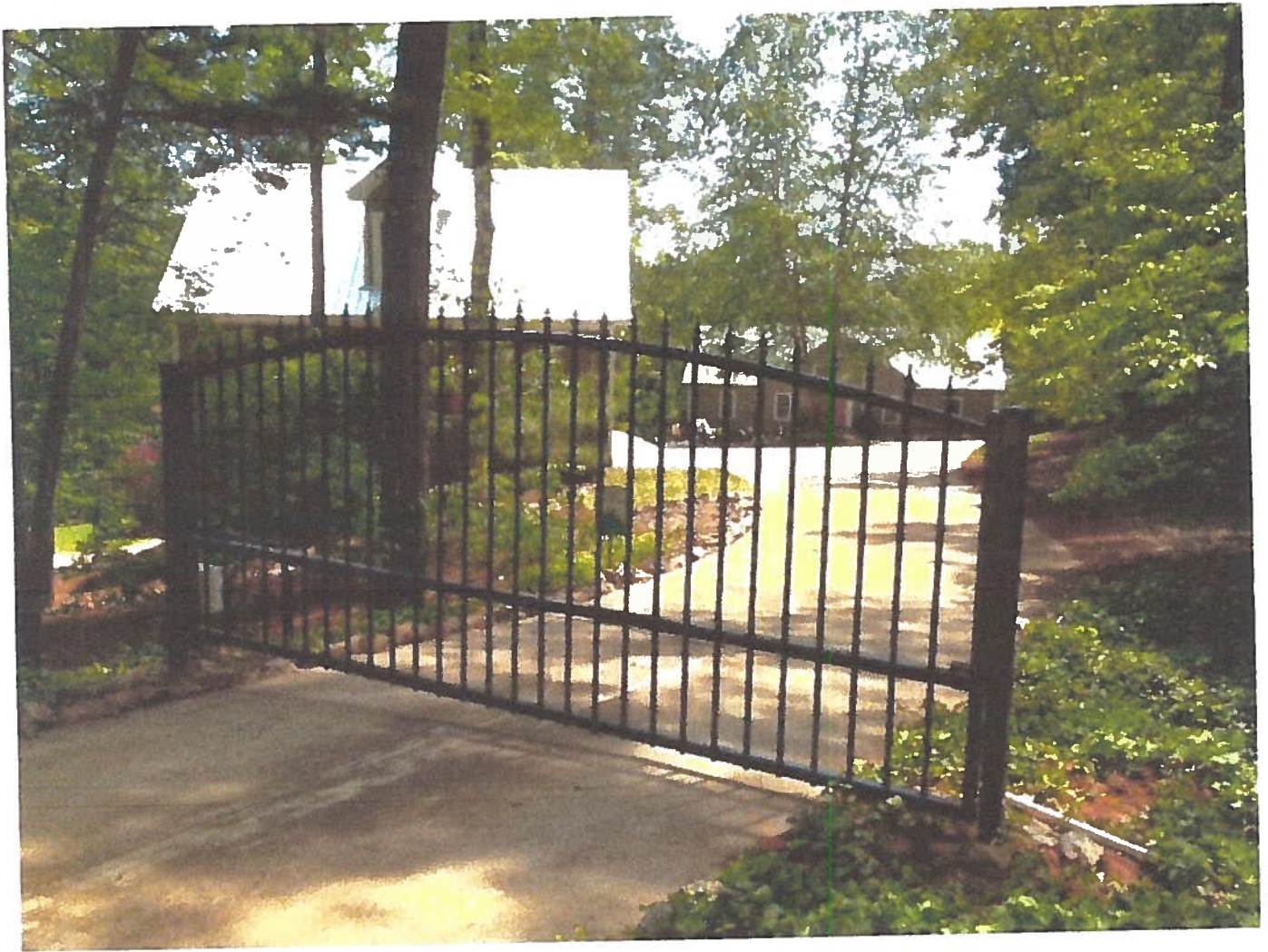
Clavos



Morano Builder Series
Model: Fayette
Paint Grade Flat Panels
4 OV 4 Arched Glass



Charles River Series
Model: Franklin
Stain Grade Sapele Raised Panels
Prairie Grille Arched Glass





The Estate Swing 12 Foot Long, Single Driveway Gate Made in USA

Estate SWING



Retail Price: ~~\$4,398.00~~
Sale Price: Price: \$699.00

Quantity:

- [Add to Cart](#)
- [Instant Price Match](#)
- [Calculate Shipping](#)
- [Email me a Quote](#)

[BOOKMARK](#)



Chat with a live representative or Send us an email

1-800-537-4283



A temporary \$200.00 authorization hold will be placed on your form of payment for Web Direct Brands, Inc.'s Gate Lift Equipment. The hold will be released once the equipment is returned.

Please note: that the equipment will need to be returned with in a 30 day window of delivery. A pre-paid label will be attached with instructions for returns.



Product Details

- [Standard Features & Additional Options](#)
- [Further Images](#)
- [Automation & Warranty Information](#)
- [Why Gate Crafters](#)
- [Specifications](#)
- [Words from Senior Application Engineer](#)
- [Detailed Images](#)
- [Gate Construction](#)
- [Customer Gate Photos](#)

Specifications

[Top of Page](#)

- Gate Length: 11 feet, 9.25 inches long
- Gate Length + Hinge: 12 feet, 1.25 inches long
- Gate Length + Hinge + Estate Swing 3" Mounting posts: 12 feet, 7.25 inches long
- Height: 5 feet on sides, 6 feet at the apex

From the innovative brand Estate Swing known for its dependable gate automation comes the new eye catching and affordable Estate Swing Driveway Gate Collection. With an elegant sweeping arc and clean lines this single 12 foot long gate is functional both in its appearance and in regard to automation. The design incorporates classic artistry, sturdy wrought aluminum alloy and a smooth powder coated finish. Unlike other driveway gates where automation is a secondary thought, Estate Swing recognized the need for operator placement from the start; therefore customer automation preferences were considered beforehand which ultimately prevents awkward looking and structurally unsound flat bars from being added later on. See "gate construction" below for more details on how other gate companies fail to create much needed automation support.

By using 6061-T6 wrought aluminum 3/4 inch pickets and a full 2 inch square frame members we create a tough and durable gate that is stronger lighter and is almost twice as resistant to denting or bending than steel, which in turn, is safer for people and objects as well as extends the operator life since it puts less strain on the gears. As gate automation professionals, Estate Swing sought to anticipate the needs of consumers and incorporate those details when designing this dynamic driveway gate. It's easy to drill, easy to lift, easy to automate which keeps both the DIY installation effort and cost down significantly.

One other unique factor about our Estate Swing Driveway Gate Collection is that they are made in the U.S. by skilled welders which follow the American Welding Society's Standards. Keeping the manufacturing local allows for efficient quality review and substantially quicker shipping time compared to overseas outsourcing.

With all of these features and benefits another company would charge a much higher price, but because GateCrafters.com has a special relationship with Estate Swing, we've decided to pass the savings on to you! From our loyal GateCrafters customers we've heard the request for affordable

security. Never before has such a well designed driveway gate been so accessible and so affordably priced.

Words From Senior Application Engineer, Anthony Gaeto

[Top of Page](#)

"The Estate Swing pre-manufactured are readily in stock are available to be shipped to your home or business. These gate come in various lengths from 12 and 14 foot single leaf gates and 14 and 16 foot dual leaf gate. Each gate comes with our standard finial, but you have the option to order custom ones from our website.

The Estate Swing gates are built for automation and strength, as well as durability. The gate is made from strong 6061-T6 aluminum and then are powder coated to ensure the durability of the gate. The frame of the gate is made from 2 inch square 6061-T6 aluminum bars. This gives you a sturdy location to attach your gate opener and hinges. The frame and pickets are welded at multiple locations by skilled American welders.

To round out your gate kit, I recommend you order Gate Crafters' heavy duty gate hinge kit. These hinges are built to last and feature a grease fitting which keeps the ball bearing moving freely. This kit was designed for the **DIYer** in mind. The installation of this gate is very easy and will add value to your home or business.

Gate Crafters started the **DIY** gate business on the internet. We strive to please our customers and offer products that install with ease. Gate Crafters has experts standing by to help you with any question you may have 7 days a week from 9 am to 9 pm, eastern time. We can put together a complete kit that you will be able to install yourself. So please give us a call, send an email, or use our live chat on our website. We look forward to hearing from you."

Detailed Images - Click to Enlarge

[Top of Page](#)



[Top Measurements](#)



[Single Gate](#)



[Single Angled](#)



[Standard Finial](#)



[Post Cap](#)

Further Images - Click to Enlarge

[Top of Page](#)



[Cap & Standard Finials](#)



[Close Angle](#)



[Top Angle](#)



[Support Bar](#)



[Bottom Corner](#)

Standard Features & Additional Options

[Top of Page](#)

Each Estate Swing Driveway Gate comes standard with finials and end caps, depicted in the image above. However, you do have the option to upgrade your finials (and replace the standard) by selecting from the related items offered below. Additionally, price is for gate only: bolt on hinge plates or posts sold separately and can be found in the related items.

Gate Construction

[Top of Page](#)

As mentioned above the construction of the Estate Swing Driveway Gate compared to other brands is no subtle difference because automation concerns were implemented during its design process. Only as an afterthought will other gate manufactures add on narrow, structurally unsound flat bars to attach the operator - which negatively affects the gates overall structural integrity. Either the bars become loose which puts uneven pressure on the opener as it retracts (scraping the paint and stripping away at the core metal). Or if it does stay in place, that plate is bolted to only 2 or 3 pickets leaving those few narrow pickets to uphold the weight, movement and pressure of the opener. Meanwhile, Estate Swing Driveway Gates are supported by the full frame and entire collection of thicker than average pickets. It is clear that many customers seek to automate their gate, so Estate Swing Driveway Gates were designed to achieve this purpose not as an afterthought but as a main feature of its design.

Estate Swing Driveway Gates are made with 6061-T6 wrought aluminum alloy and then powder coated for a protective seal and uniform color. The 6061-T6 wrought aluminum is a high-grade alloy with a yield strength of about 40,000 pounds per square inch*. For comparison, this is much stronger than "mild steel" which has a yield strength at about 20,000 to 30,000 pounds per square inch. Furthermore aluminum will not rust. 6061-T6 wrought aluminum is used for the purpose of durability and resiliency, providing a quality dent resistance and lasting beauty. [Compare Aluminum vs. Steel Gates Here](#)

Powder coating is the process by which powdered pigment is applied to and cured on a surface. It consists of a mechanical and/or chemical treatment of the surface to remove impurities and contaminants followed by the application of the pigments. Then the material is cured at high temperatures which makes the pigments flow together and react chemically to form the coating. Powder coating is preferred for certain surfaces because it creates or contains close to no volatile organic compounds and does not sag or run with thicker coats. The overspray can also be recycled so there is little waste, making it less expensive and creating less hazardous waste. Our Estate Swing Driveway Gates are powder coated to provide the most uniform appearance possible.

Estate Swing Gates are powder coated in the USA by a DuPont certified powder coater. DuPont coatings deliver quality results through transfer efficiency and premium coverage. As a trusted industry leader, DuPont's powder coating formulations offer environmentally responsible coatings that reduce waste while providing a superior end finish.

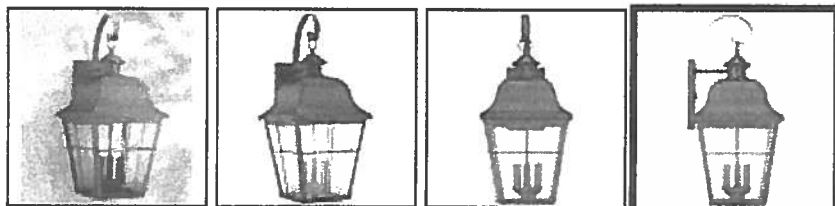
Estate Swing Gates' certified powder coater also went under rigorous testing and analysis to achieve DuPont Platinum Certification, one of two prestigious companies in America to hold this honor. Every Estate Swing Gate holds this durable, long-lasting DuPont powder coated finish resulting in an exceptional product line of quality driveway gates.



Customer Gate Photos

[Top of Page](#)

Quoizel Millhouse 22" High Black Outdoor Wall Light - Style # 5F666



DAILY SALE Save \$50.00

\$169.95

~~\$219.99~~ | Ends 7/29/18

FREE SHIPPING*

1 SOLD OUT

ADD TO WISH LIST

VIEW IN YOUR ROOM



Description

Constructed of steel, this outdoor wall light also features panels of clear seeded glass for soft, pleasant illumination.

Influenced by classic lantern design, this traditional outdoor wall light is ideal for garage areas, porches, and more. Made of steel with clear seeded glass panels and a rich and elegant Mystic black finish for a polished look and feel. From the Millhouse Collection by Quoizel.

- Clear seeded glass panels.
- Mystic black finish.
- Steel construction.
- From the Quoizel brand.
- Carriage house, coach light style.
- Three maximum 60 watt or equivalent candelabra base bulbs (not included).
- 22" high.
- 10" wide.
- Extends 10 1/2" from the wall.
- Wet location outdoor rated.

QUOIZEL

Shop all Quoizel

Related Videos



Outdoor Buying Guide



Outdoor Lighting Types



Outdoor Lighting Size Guide



Security Lighting